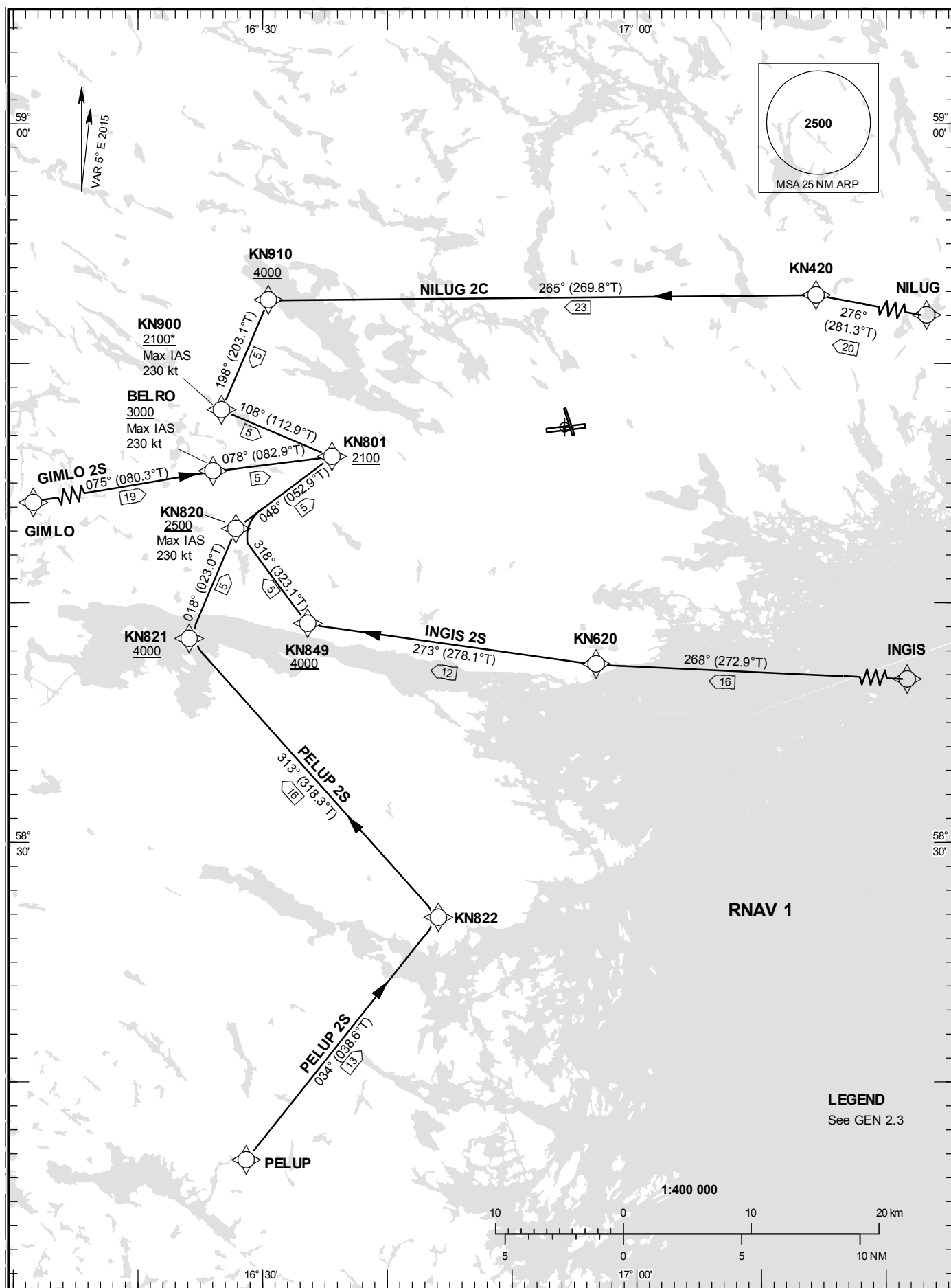


STOCKHOLM/Skavsta
RNAV (GNSS) STAR RWY 08

**STANDARD INSTRUMENT
ARRIVAL CHART (STAR) -
ICAO**

HGT and ALT in ft
BRG are MAG (True)
TA 5000 ft AMSL

SKAVSTA TOWER	127.705
ÖSTGÖTA APPROACH	132.955



STOCKHOLM/Skavsta

Prescribed Coding of RNAV STAR for RWY 08

GIMLO 2S

Path Desc	Waypoint Identifier	Fly-over	Course °M(°T)	Dist (NM)	Turn Dir	Altitude	Speed	VPA/RDH	Rec Navaid	Navigation Specification
IF	GIMLO	-	-	-	-	-	-	-	-	RNAV 1
TF	BELRO	-	075°(080.3°)	18.7	-	+3000	-230	-	-	RNAV 1
TF	KN801	-	078°(082.9°)	5.0	-	+2100	-	-	-	RNAV 1

STAR instruction: GIMLO – BELRO (max IAS 230 kt, 3000 ft or above) – KN801 (2100 ft or above)

INGIS 2S

Path Desc	Waypoint Identifier	Fly-over	Course °M(°T)	Dist (NM)	Turn Dir	Altitude	Speed	VPA/RDH	Rec Navaid	Navigation Specification
IF	INGIS	-	-	-	-	-	-	-	-	RNAV 1
TF	KN620	-	268°(272.9°)	16.3	-	-	-	-	-	RNAV 1
TF	KN849	-	273°(278.1°)	12.2	-	+4000	-	-	-	RNAV 1
TF	KN820	-	318°(323.1°)	5.0	-	+2500	-230	-	-	RNAV 1
TF	KN801	-	048°(052.9°)	5.0	-	+2100	-	-	-	RNAV 1

STAR instruction: INGIS – KN620 – KN849 (4000 ft or above) – KN820 (max IAS 230 kt, 2500 ft or above) – KN801 (2100 ft or above)

NILUG 2C

Path Desc	Waypoint Identifier	Fly-over	Course °M(°T)	Dist (NM)	Turn Dir	Altitude	Speed	VPA/RDH	Rec Navaid	Navigation Specification
IF	NILUG	-	-	-	-	-	-	-	-	RNAV 1
TF	KN420	-	276°(281.3°)	20.5	-	-	-	-	-	RNAV 1
TF	KN910	-	265°(269.8°)	22.8	-	+4000	-	-	-	RNAV 1
TF	KN900	-	198°(203.1°)	5.0	-	+2100	-230	-	-	RNAV 1
TF	KN801	-	108°(112.9°)	5.0	-	+2100	-	-	-	RNAV 1

STAR instruction: NILUG – KN420 – KN910 (4000 ft or above) – KN900 (max IAS 230 kt, 2100 ft or above) – KN801 (2100 ft or above)

PELUP 2S

Path Desc	Waypoint Identifier	Fly-over	Course °M(°T)	Dist (NM)	Turn Dir	Altitude	Speed	VPA/RDH	Rec Navaid	Navigation Specification
IF	PELUP	-	-	-	-	-	-	-	-	RNAV 1
TF	KN822	-	034°(038.6°)	13.0	-	-	-	-	-	RNAV 1
TF	KN821	-	313°(318.3°)	15.7	-	+4000	-	-	-	RNAV 1
TF	KN820	-	018°(023.0°)	5.0	-	+2500	-230	-	-	RNAV 1
TF	KN801	-	048°(052.9°)	5.0	-	+2100	-	-	-	RNAV 1

STAR instruction: PELUP – KN822 – KN821 (4000 ft or above) – KN820 (max IAS 230 kt, 2500 ft or above) – KN801 (2100 ft or above)